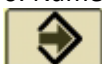


## How to...Make an A B line using the A + B method,



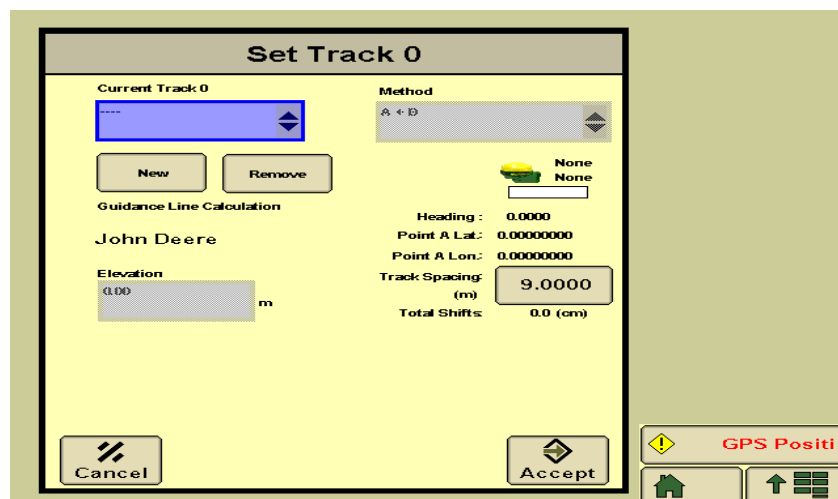
1. Press **Main Menu** button
2. Press **GS2 or GS3** button
3. Press **Guidance** button **B**
4. Press **Set Track 0** button
5. Press **New** button
6. Name the AB and press **Accept** button, the name will enable you to recall the track at a later date



7. Set the method to **A + B**
8. Verify **track spacing** is correct, this will be the width you wish to drive at and not necessarily the width of your machine.
9. Position vehicle at your chosen point A and press the **Set A** button
10. Drive a minimum of 15 metres or all the way to the other end of field and push **Set B** button
11. Press **Accept** button



12. Press **Steering On** button to light the 3<sup>rd</sup> piece of the pie chart
13. Press **Home** button
14. Press the Auto Trac **Resume** switch on the tractor quadrant or command arm to enable the vehicle to steer itself along your chosen track



Need further advice? E-mail your enquiry to [chrisjacques@reavalleytractors.com](mailto:chrisjacques@reavalleytractors.com)

[www.reavalleytractors.com](http://www.reavalleytractors.com)